

STUDY ABROAD – INTERNATIONAL STUDENTS

SORBONNE NOUVELLE UNIVERSITY

2024-2025 FACT SHEET

Sorbonne Nouvelle University welcome students from all around the world !

KEY CONTACTS

International Student Office

Inbound / Outbound students queries, nominations, exchange balance admission, enrolment:

mobilite.internationale@sorbonne-nouvelle.fr

Tel: +33 1 45 87 48 48

Erasmus Student Office

Inbound students, nominations, exchange balance, learning agreement, admission, enrolment:

erasmus-incoming@sorbonne-nouvelle.fr

Tel: +33 1 45 87 48 48

International Student Services Office

Orientation, activities and healthcare

accueil-international@sorbonne-nouvelle.fr

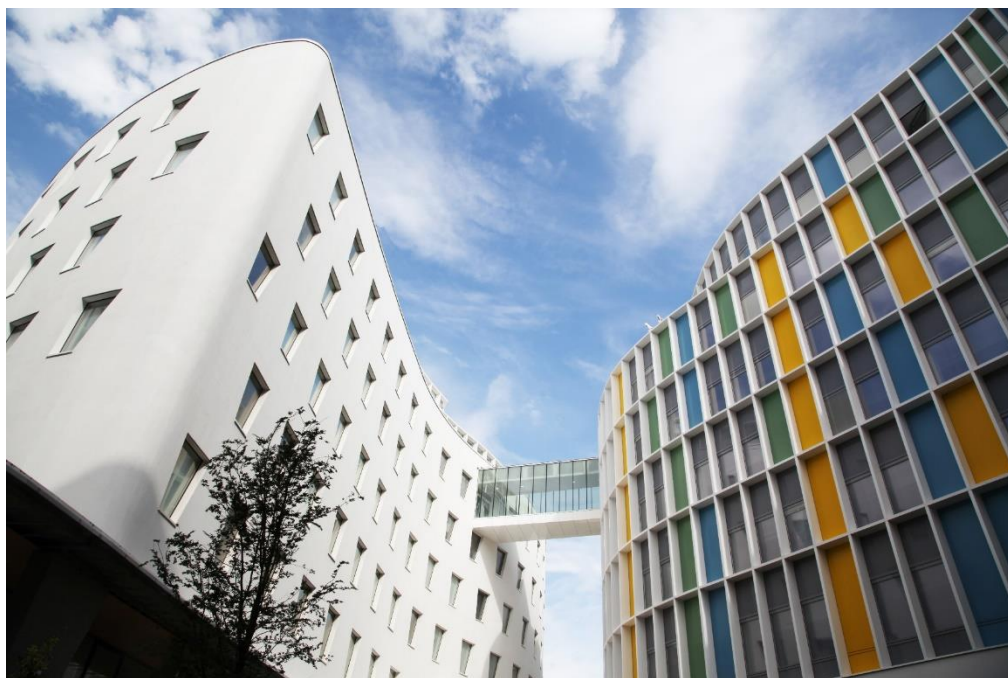
Tel: +33 1 45 87 78 13

Accommodation

logement-international@Sorbonne-nouvelle.fr

Tel: +33 1 45 87 79 15

[Visit our page for more information](#)



APPLICATION DEADLINES

Semester 1 (September - December)

- Nomination and application deadline:
From 15 February to 15 May 2024

Semester 2 (January – April)

- Nomination deadline and application deadline:
From 15 September to 15 of November 2025

NOMINATION PROCESS

Step one

Students need to be nominated by advisors will need to use:

[Our forms](#)

Step two

Then, all exchange students must complete:

[The Online Application Form](#)

IMPORTANT DATES

Semester 1 / Fall - 2024

- Orientation: beginning of September
- Classes registration: beginning of September
- Classes begin: beginning of September
- Semester break: mid- October – November
- Classes end: end of December
- Final exams: end of December
(It can last until the beginning January for students staying full academic year)
- Winter break: end-December – beg-January

Semester 2 / Spring - 2025

- Orientation: beginning of January
- Classes registration : beginning of January
- Classes begin: beginning of January
- Semester breaks: mid-February
mid-April
- Classes end: end of April
- Final exams: end April – beginning of May
- Catch up exams : mid-June
(only for students staying for 1 year / spring)



ACADEMIC AND ENROLMENT REQUIREMENTS

Candidates who can speak French are required to have a B2 level in French to enable them to follow the courses and complete the written assignments. Official exams like DELF or professor attestation are accepted. We do not offer French courses for beginners, but semester-long courses are offered to exchange students to perfect their knowledge of the language, French culture and methodology. At the beginning of September, an intensive French language course is offered free of charge to exchange students on registration.

Candidates who do not speak French can follow courses in English. However the offer is limited, to English-speaking world and Applied Foreign Languages courses.

You will be able to register to your classes starting from the Orientation Day. Your main department will be the one where your university nominated you and that appear on your admission letter. **Your need to pick at least one course in your main department.** Then, you can register up to 3 departments, main department included.

Sorbonne Nouvelle University does not require you to take a minimum of ECTS, the number of courses you need to take depends on your home university requirements.

[Course catalogue](#)

STUDENT ORIENTATION AND SERVICES



Students must attend the Orientation Day that provides essential information on enrolment, workload, change of enrolment/withdrawal deadlines, and student support.

During the two following weeks, there is a full schedule of orientation events and information sessions that students can attend. In addition to these events, exchange students have compulsory orientation events. The International Student Services Office has a team of student advisors who act as a point of first-contact for students while they're living and studying at Sorbonne Nouvelle University.

The Welcome Desk is there to listen to your students, and works closely with other student support groups to ensure that international students are supported and cared for while they're studying with us. Throughout the year many international event are organized which allow international students to meet and exchange in different languages.

[More information on this page.](#)

STUDENT VISA

Following the application deadline, up to three weeks after, the International Office will issue your admission letter. Thanks to this document you can obtain your student visa from [France-visas.gouv.fr](https://france-visas.gouv.fr) with their [browser](#).

HEALTHCARE & SUPPORT

If you do not have an European Health Insurance Card you can take the [free social security](#).

Before or during your stay at Sorbonne Nouvelle University, you can be helped by our [handicap service](#).

TRANSPORTATIONS

By being a student you can enjoy preferential tariff for transportations: [subways](#) and [bikes](#).

ACCOMMODATION AND ARRIVAL

Each semester the Accommodation Office offers rooms in University Residence of the CROUS in Paris:

| [Argonne](#) | [Bercy / Cîteaux](#) | [Fontaine au roi 1](#) | [Fontaine au roi 2](#) | [Indochine](#) | [Reuilly](#) | [Sarrailh](#) | [Thionville](#) |

Application dates:

Semester 1

Mid-May to mid-June 2024

Semester 2

Mid- October to mid-November 2024

You can only apply once you has been nominated by your home university, and [have completed your registration online as an exchange student](#). Do not wait to be accepted to apply for accommodation.

Please note that there is no guarantee that your application will be accepted, therefore once you have applied you should start looking for accommodation as soon as possible. You can ask help from the [welcome desk](#).

Results will be published by the Accommodation Office.

STUDENT TRANSCRIPTS

All study abroad and exchange students are provided with an academic transcript for their studies at Sorbonne Nouvelle. These are processed as Semester results are finalized, and emailed. Where possible, issuing of final results will be accelerated if there is a reason for urgency (i.e. graduation) but this cannot be guaranteed.

